

Submittal Data: SC-09CD-HP230 9,000 BTU/H Ceiling Cassette

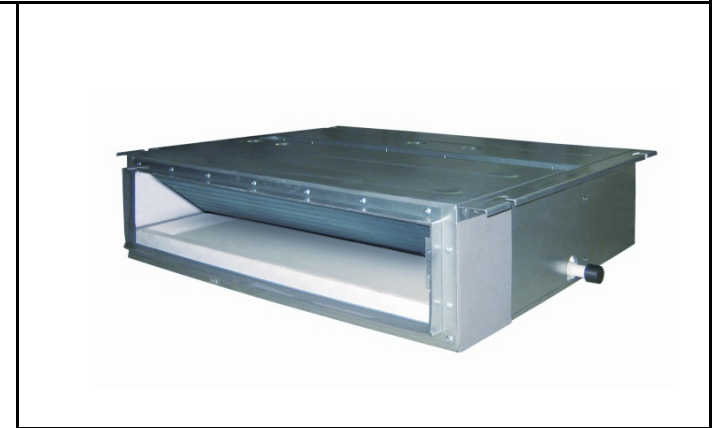
Job Name Location Date

Purchaser Engineer

Submitted To For Reference Approval Construction

Unit Designation Schedule No.

GENERAL FEATURES
 -Quiet Operation -Multi-Speed Fan
 -Medium Static Pressure Capability
 -Slim Line Construction 8" high
 -Internal Condensate Drain Pump
 -Return Air From Rear Only
 -Wired Controllers
 -Wireless Remote Controllers
 -Sentry Condensate Overflow Protection



System Ratings

Units Specification & Data

Cooling*
 Rated Capacity 8,500 BTU/H

Heating*
 Rated Capacity 9,500 BTU/H

Sound Level (Hi/Lo)**
 Cooling 37/31 dbA
 Heating 37/31 dbA

Air Flow (min/max)
 Indoor Fan 147/265 CFM

Ext Static Pressure (max/min) 0.040/0.025 inch wg

Wired Controller XK-19

Condensate Drain Lift (Height) 18-in
 457-mm

Drain Size (OD) 1.0-in
 26-mm

Electrical Ratings

Refrigerant Piping Data

Fan Motor
 Output Power 80 W
 FLA 0.35 A

Power Supply
 Normal Operational Voltage 208/230 V, 1 Phase, 60 Hz
 Voltage Range 187 - 253 V
 MCA 1.0 A
 Interconnecting Cable Wire Size 14-4 AWG

Refrigerant Type R410A

Gas Pipe Size (OD) 3/8-in

Liquid Pipe Size (OD) 1/4-in

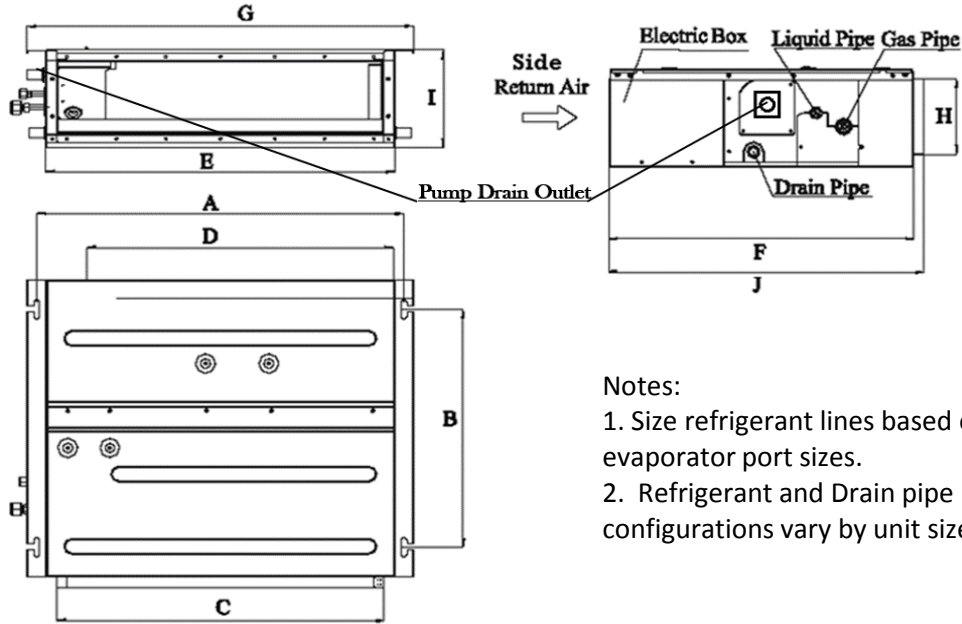
Connection Method Flared

* Test conditions are based on AHRI 210/240.
 **Sound Level ratings are per AHRI 270 and AHRI 350



9,000 BTUH MODEL

Model # SC-09CD-HP230 9,000 BTUH 230V



Notes:

1. Size refrigerant lines based on evaporator port sizes.
2. Refrigerant and Drain pipe configurations vary by unit size.

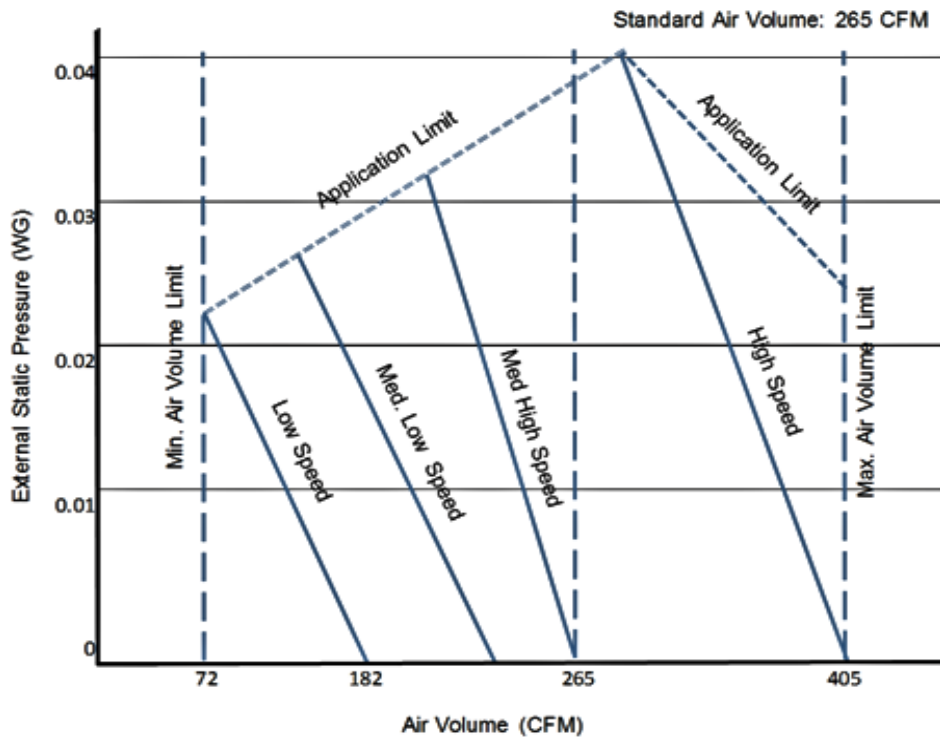
Dimensions

| | A | B | C | D | E | F | G | H | I | J |
|----------|------|------|------|------|------|------|------|-----|-----|------|
| (mm) | 742 | 491 | 662 | 620 | 700 | 615 | 782 | 156 | 200 | 635 |
| (inches) | 29.2 | 19.3 | 26.1 | 24.4 | 27.6 | 24.2 | 30.8 | 6.1 | 7.9 | 25.0 |

Weight (Net/Gross) 49/60 lbs

INDOOR FAN PERFORMANCE DATA

WG = inches of water guage



Notes:

1. Recommended Interconnecting Cable Type Stranded Bare Copper Conductors THHN 600V Unshielded Wire
2. Power wiring cable size must comply with applicable national and local codes.
3. Test conditions are based on AHRI 210/240.

Specifications are subject to change without notice. Manufacturer reserves the right to discontinue or modify specifications or designs without notice or without incurring obligations. All rights reserved.