

**Submittal Data: SC-36WGLD-HP230 / SC-36ZGLD-HP230** 36 MBH (208/230V) Wall Mounted Heat Pump System

|                  |              |  |
|------------------|--------------|--|
| Job Name         | Location     | Date   |
| Purchaser        | Engineer     |  |
| Submitted To     | For          | <input type="checkbox"/> Reference <input type="checkbox"/> Approval <input type="checkbox"/> Construction |
| Unit Designation | Schedule No. |  |

- GENERAL FEATURES**
- Compact and Quiet Design
  - High Efficiency DC Inverter Technology
  - Wireless Remote with LCD Display
  - Wi-Fi Ready
  - Wired Controller (Sold Separately)
  - Low Ambient Cool to 0 deg F
  - Blue Fin Condenser Coil



**System Ratings**

|                         |       |                     |
|-------------------------|-------|---------------------|
| <b>Cooling</b>          |       |                     |
| Rated Capacity          |       | 33,600 BTU/H        |
| Capacity Range          |       | 7,404-35,997 BTU/H  |
| Power Input (Max)       |       | 4,300 W             |
| SEER                    |       | 18.0                |
| EER                     |       | 8.2                 |
| <b>Heating at 47° F</b> |       |                     |
| Rated Capacity          |       | 34,600 BTU/H        |
| Capacity Range          |       | 14,979-35,997 BTU/H |
| Power Input (Max)       |       | 4,300 W             |
| HSPF                    |       | 9.0                 |
| COP                     |       | 2.7                 |
| <b>Heating at 17° F</b> |       |                     |
| Rated Capacity          |       | 20,200 BTU/H        |
| <b>Operating Range</b>  |       |                     |
| Cooling                 | (Max) | 109°F (43 C)        |
|                         | (Min) | 0°F (-18 C)         |
| Heating                 | (Max) | 75°F (24 C)         |
|                         | (Min) | -4°F (-20 C)        |

**Indoor Unit Data**

|                             |              |             |
|-----------------------------|--------------|-------------|
| <b>Fan Motor</b>            | Type         | Cross-Flow  |
|                             | Output Power | 70 W        |
|                             | FLA          | 0.4 A       |
| <b>Airflow</b>              |              |             |
| Cooling                     | Wet (Lo/Hi)  | 412/736 CFM |
| Heating                     | Dry (Lo/Hi)  | 412/736 CFM |
| <b>Sound Pressure Level</b> |              |             |
| Cooling                     | (Min/Max)    | 37/54 dB(A) |
| Heating                     | (Min/Max)    | 37/54 dB(A) |
| <b>Dehumidification</b>     |              | 7.40 pt/hr  |

**Refrigerant Piping Data**

|                                |            |
|--------------------------------|------------|
| Gas Pipe Size (OD)             | 5/8-in     |
| Liquid Pipe Size (OD)          | 1/4-in     |
| Connection Method              | Flared     |
| Factory Charge                 | 91.7 oz    |
| Additional Charge              | 0.54 oz/ft |
| Pre-Charge Length              | 25-ft      |
| MAX Refrigerant Pipe Length    | 98-ft      |
| MIN Refrigerant Pipe Length    | 10-ft      |
| MAX Refrigerant Pipe Elevation | 33-ft      |

**Outdoor Unit Data**

|                             |              |                           |
|-----------------------------|--------------|---------------------------|
| <b>Compressor</b>           | Type         | DC Inverter Driven Rotary |
|                             | RLA          | 17.5 A                    |
| <b>Refrigerant Type</b>     |              | R410A                     |
| <b>Fan Motor</b>            | Output Power | 170 W                     |
|                             | FLA          | 0.73 A                    |
| <b>Sound Pressure Level</b> |              |                           |
| Cooling/Heating             |              | 65/65 dB(A)               |

**Electrical Data**

|                            |  |                           |
|----------------------------|--|---------------------------|
| <b>Power Supply</b>        |  |                           |
| Normal Operational Voltage |  | 208/230 V, 1 Phase, 60 Hz |
| Voltage Range              |  | 187 - 253 V               |
| MCA                        |  | 24.0 A                    |
| MOCP/Breaker Size          |  | 40 A                      |
| Main Power Wire Size       |  | 8-2 AWG                   |

## Features & Function Summary

| SYSTEM FEATURES                    |                            |
|------------------------------------|----------------------------|
| Inverter Type                      | G10                        |
| Ultra Low Frequency Torque Control | Yes                        |
| Power Factor Correction            | Yes                        |
| Compressor Type                    | High Eff. Rotary           |
| Refrigerant Type                   | R410A                      |
| Basepan With Electric Heater       | YES                        |
| Compressor With Electric Heater    | YES                        |
| Outdoor Fin Coating                | Blue Fin                   |
| Intelligent Defrosting             | YES                        |
| Intelligent Preheating             | YES                        |
| Low Voltage Startup                | YES                        |
| Memory/Power Failure Recovery      | YES                        |
| Self Diagnosis                     | YES                        |
| Wired Controller Interface         | YES                        |
| Wi-Fi Interface Capable            | Optional (see PN: WSBEC02) |
| Indoor Fan Type                    | Crossflow                  |
| Multi Fan Speeds                   | 4 Speeds                   |
| Indoor Unit Display                | YES                        |
| Advance Filter                     | Optional (see Filter Kits) |
| Auxiliary Electrical Heater        | NO                         |
| Ventilation (Outdoor Air)          | NO                         |

| REMOTE CONTROLLER FUNCTIONS        |     |
|------------------------------------|-----|
| Auto Mode                          | YES |
| Auto Fan                           | YES |
| Auto Swing (Horizontal Auto Swing) | NO  |
| Auto Swing (Vertical Auto Swing)   | YES |
| Clock on Remote Controller         | YES |
| Dry Mode                           | YES |
| Dry Anti-Mildew (X-Fan) Mode       | NO  |
| Energy Saving Mode                 | YES |
| Dirty Filter Alert                 | NO  |
| I Feel Function                    | YES |
| Lock on Remote Controller          | YES |
| Quiet Mode                         | NO  |
| Room Temperature Display           | YES |
| Sleep Mode                         | YES |
| 4 Sleep Modes Options              | NO  |
| Timer Mode                         | YES |
| Turbo Mode                         | YES |
| Display On/Off Control             | YES |
| Freeze Guard Mode                  | YES |
| Display On/Off Control             | YES |
| Freeze Guard Mode                  | YES |

**EXTENDED RATINGS**

**COOLING PERFORMANCE (BtuH)\***

| Outdoor Ambient DB | Indoor Ambient Temperature |        |              |        |              |        |              |        |
|--------------------|----------------------------|--------|--------------|--------|--------------|--------|--------------|--------|
|                    | 68F DB (20C)               |        | 73F DB (23C) |        | 80F DB (27C) |        | 82F DB (28C) |        |
|                    | 57F WB (14C)               |        | 61F WB (16C) |        | 67F WB (19C) |        | 68F WB (20C) |        |
|                    | TC                         | SHC    | TC           | SHC    | TC           | SHC    | TC           | SHC    |
| 5°F                | 19,555                     | 15,337 | 20,658       | 16,196 | 23,315       | 18,286 | 23,665       | 18,561 |
| 14°F               | 20,803                     | 16,316 | 21,977       | 17,230 | 24,803       | 19,454 | 25,175       | 19,745 |
| 23°F               | 22,792                     | 17,879 | 24,379       | 19,123 | 27,933       | 21,909 | 28,352       | 22,237 |
| 32°F               | 23,932                     | 18,773 | 25,598       | 20,079 | 29,330       | 23,004 | 29,770       | 23,349 |
| 41°F               | 25,129                     | 19,712 | 26,878       | 21,083 | 30,796       | 24,154 | 31,258       | 24,517 |
| 50°F               | 26,385                     | 20,697 | 28,222       | 22,138 | 32,336       | 25,362 | 32,821       | 25,742 |
| 59°F               | 27,640                     | 21,677 | 29,564       | 23,186 | 32,379       | 25,388 | 32,864       | 25,769 |
| 68°F               | 31,303                     | 24,551 | 33,259       | 26,081 | 35,542       | 27,876 | 36,075       | 28,294 |
| 77°F               | 30,933                     | 24,265 | 32,900       | 25,806 | 35,216       | 27,622 | 35,744       | 28,037 |
| 86°F               | 29,412                     | 23,065 | 31,368       | 24,606 | 34,237       | 26,852 | 34,751       | 27,255 |
| 95°F               | 27,836                     | 21,832 | 29,781       | 23,351 | 32,607       | 25,575 | 33,096       | 25,958 |
| 104°F              | 26,488                     | 20,775 | 28,422       | 22,294 | 31,759       | 24,914 | 32,236       | 25,288 |
| 113°F              | 25,129                     | 19,707 | 27,064       | 21,226 | 30,411       | 23,846 | 30,868       | 24,204 |

**HEATING PERFORMANCE (BtuH)\***

| Outdoor Ambient DB | Indoor Ambient Temperature |        |              |        |              |        |              |        |
|--------------------|----------------------------|--------|--------------|--------|--------------|--------|--------------|--------|
|                    | 68F DB (20C)               |        | 73F DB (23C) |        | 80F DB (27C) |        | 86F DB (30C) |        |
|                    | 57F WB (14C)               |        | 61F WB (16C) |        | 67F WB (19C) |        | 72F WB (22C) |        |
|                    | TC                         | SHC    | TC           | SHC    | TC           | SHC    | TC           | SHC    |
| -4°F               | 17,515                     | 17,515 | 17,220       | 17,220 | 16,718       | 16,718 | 16,525       | 16,525 |
| 0°F                | 18,979                     | 18,979 | 18,663       | 18,663 | 18,104       | 18,104 | 17,894       | 17,894 |
| 6°F                | 20,022                     | 20,022 | 19,685       | 19,685 | 19,104       | 19,104 | 18,874       | 18,874 |
| 10°F               | 20,854                     | 20,854 | 20,506       | 20,506 | 19,895       | 19,895 | 19,664       | 19,664 |
| 16°F               | 21,486                     | 21,486 | 21,128       | 21,128 | 20,489       | 20,489 | 20,253       | 20,253 |
| 19°F               | 21,896                     | 21,896 | 21,538       | 21,538 | 20,885       | 20,885 | 20,643       | 20,643 |
| 24°F               | 24,361                     | 24,361 | 23,992       | 23,992 | 23,322       | 23,322 | 23,108       | 23,108 |
| 32°F               | 27,226                     | 27,226 | 26,857       | 26,857 | 26,156       | 26,156 | 25,972       | 25,972 |
| 41°F               | 30,501                     | 30,501 | 30,143       | 30,143 | 29,395       | 29,395 | 29,248       | 29,248 |
| 43°F               | 31,323                     | 31,323 | 30,954       | 30,954 | 30,208       | 30,208 | 30,069       | 30,069 |
| 47°F               | 34,040                     | 34,040 | 33,450       | 33,450 | 32,416       | 32,416 | 31,997       | 31,997 |
| 53°F               | 34,377                     | 34,377 | 33,777       | 33,777 | 32,739       | 32,739 | 32,313       | 32,313 |
| 59°F               | 35,167                     | 35,167 | 34,546       | 34,546 | 33,478       | 33,478 | 33,050       | 33,050 |
| 64°F               | 35,915                     | 35,915 | 35,283       | 35,283 | 34,197       | 34,197 | 33,756       | 33,756 |
| 70°F               | 36,589                     | 36,589 | 35,957       | 35,957 | 34,843       | 34,843 | 34,398       | 34,398 |
| 75°F               | 37,105                     | 37,105 | 36,452       | 36,452 | 35,333       | 35,333 | 34,872       | 34,872 |

\* Maximum system capacity

TC- Total Capacity ( BtuH)

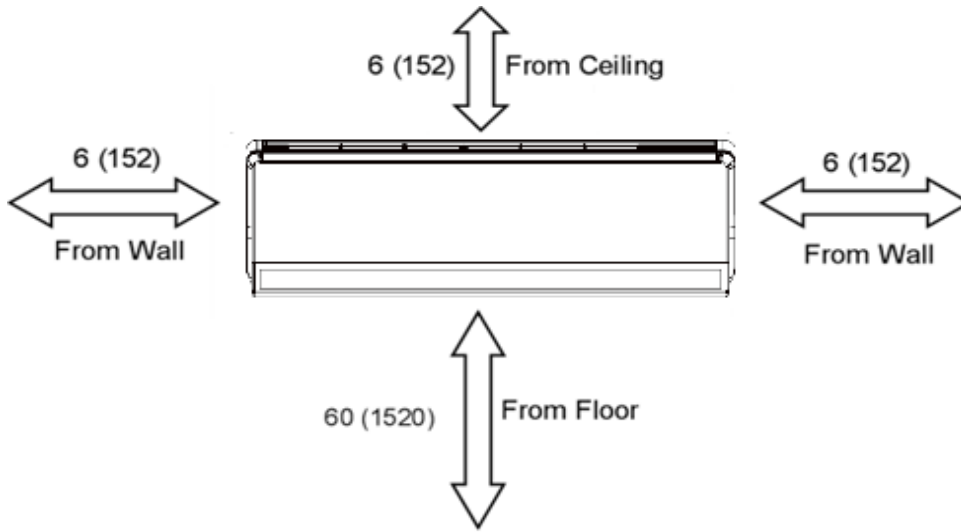
SHC- Sensible Capacity (BtuH)

# DIMENSIONAL SPECIFICATIONS

## MINIMUM SPACING REQUIREMENTS

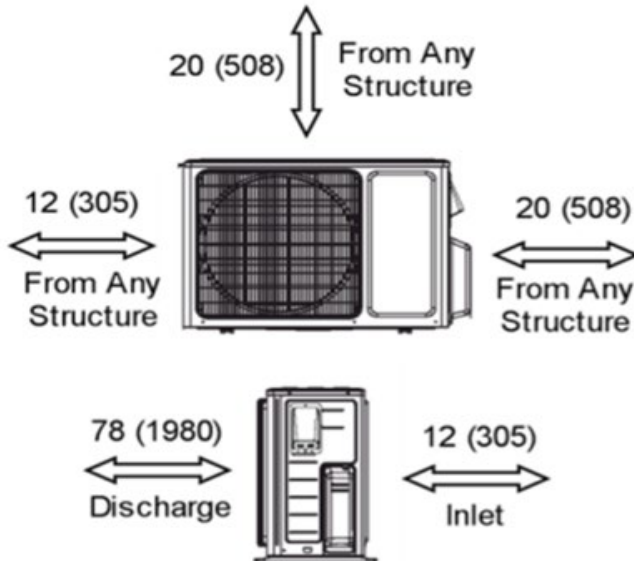
Units: inch (mm)

### INDOOR



Units: inch (mm)

### OUTDOOR

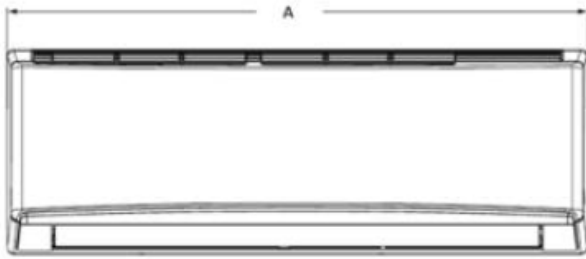


## DIMENSIONAL SPECIFICATIONS

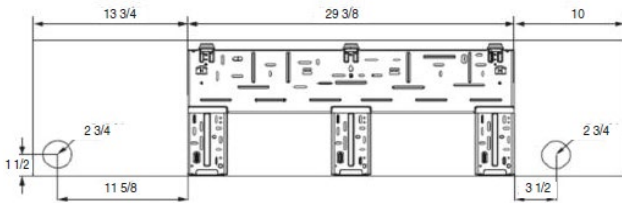
### INDOOR UNIT DIMENSIONS

Units: inch

Model No:



| Dimensions |      |
|------------|------|
| A          | 53.1 |
| B          | 12.8 |
| C          | 10.0 |



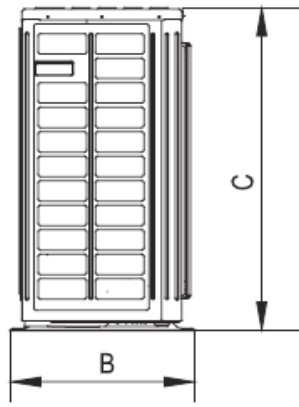
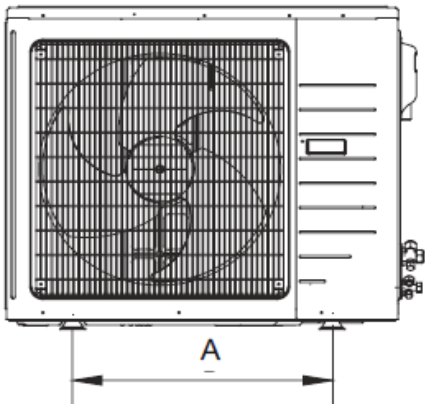
Weight (Net/Gross) 41.9/51.6 lbs

|                   |                  |
|-------------------|------------------|
| Liquid Line Valve | 1/4-in OD Flared |
| Gas Line Valve    | 5/8-in OD Flared |
| Drain Connector   | 5/8-in OD        |

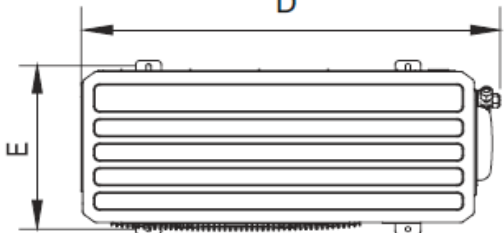
### OUTDOOR UNIT DIMENSIONS

Units: inch

Model No:



| Dimensions |      |
|------------|------|
| A          | 24.0 |
| B          | 16.8 |
| C          | 31.1 |
| D          | 38.6 |
| E          | 14.5 |



Weight (Net/Gross) 161/172 lbs

|                   |                  |
|-------------------|------------------|
| Liquid Line Valve | 1/4-in OD Flared |
| Gas Line Valve    | 5/8-in OD Flared |

**Notes:**

1. Recommended Interconnecting Cable Type 14 AWG-4 Stranded Copper Conductors THHN 600V Wire
2. Power wiring cable size must comply with applicable national and local codes.
3. Test conditions are based on AHRI 210/240.