

Features & Function Summary**SAP24HP230V1A**

Inverter Type	G10
Ultra Low Frequency Torque Control	Yes
Power Factor Correction	Yes
Compressor Type	High Eff. Two Stage Rotary
Refrigerant Type	R410A
Basepan With Electric Heater	YES
Compressor With Electric Heater	YES
Indoor & Outdoor Fin Coating	Acrylic Resin/Anti-Corrosion
Intelligent Defrosting	YES
Intelligent Preheating	YES
Low Voltage Startup	YES
Memory/Power Failure Recovery	YES
Self Diagnosis	YES
Wired Controller Interface	NO
WIFI Included	YES
Indoor Fan Type	Crossflow
Multi Fan Speeds	7 Speeds
Indoor Unit Display	YES
Auxiliary Electrical Heater	NO
Ventilation (Outdoor Air)	NO

REMOTE CONTROLLER FUNCTIONS	
Auto Mode	YES
Auto Fan	YES
Auto Swing (Horizontal Auto Swing)	YES
Auto Swing (Vertical Auto Swing)	YES
Clock on Remote Controller	YES
Dry Mode	YES
Dry Anti-Mildew (X-Fan) Mode	YES
Energy Saving Mode	NO
Dirty Filter Alert	NO
I Feel Function	YES
Lock on Remote Controller	YES
Quiet Mode	YES
Room Temperature Display	NO
Sleep Mode	YES
4 Sleep Modes Options	YES
Timer Mode	YES
Turbo Mode	YES
Display On/Off Control	YES
Freeze Guard Mode	NO
Display On/Off Control	YES

COOLING PERFORMANCE

Outdoor Ambient Temperature (DB)		Return Air Temperature			
		80°F (DB)			
		TC (Btu/h)	SHR	EER	Power Input (W)
MAX OUTPUT	0°F	8903	72.49%	5.02	1775
	5°F	11666	73.00%	5.24	2227
	10°F	12622	72.91%	5.29	2386
	15°F	12886	75.29%	5.32	2421
	20°F	13425	73.61%	5.50	2443
	25°F	13815	74.00%	5.61	2461
	30°F	14429	74.50%	5.84	2472
	35°F	15128	74.37%	5.90	2563
	40°F	16271	75.00%	5.99	2718
	45°F	17263	75.35%	6.21	2780
	50°F	18113	75.50%	6.36	2847
	55°F	18951	75.11%	6.52	2908
	60°F	19461	77.08%	6.65	2925
	65°F	20262	76.50%	6.81	2975
	70°F	22603	73.70%	7.16	3158
	75°F	24253	76.89%	7.33	3307
	80°F	25554	74.68%	7.54	3389
	85°F	26402	77.50%	7.71	3425
	90°F	25909	78.49%	7.54	3436
	95°F	25788	77.99%	7.48	3446
	100°F	20770	87.72%	7.27	2858
	105°F	18269	69.95%	7.13	2562
	110°F	14573	77.25%	6.86	2125
	115°F	12437	88.59%	6.76	1841
120°F	11300	89.25%	6.55	1725	
125°F	10891	90.05%	6.45	1689	
129°F	9529	100.00%	6.07	1569	

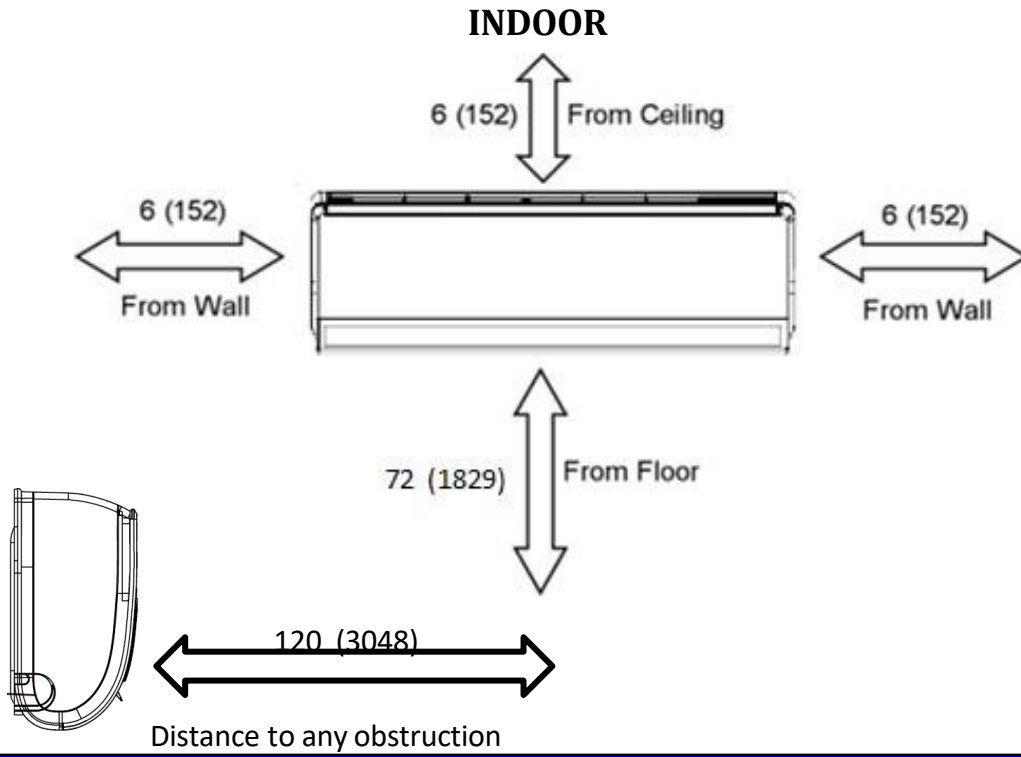
HEATING PERFORMANCE

Outdoor Ambient Temperature (DB)		Return Air Temperature		
		70°F (DB)		
		TC (Btu/h)	COP	Power Input (W)
MAX OUTPUT	-22°F	12854	1.30	2903
	-20°F	13391	1.33	2951
	-15°F	13749	1.36	2963
	-10°F	14379	1.41	2989
	-5°F	15360	1.49	3023
	0°F	17600	1.67	3085
	5°F	18560	1.73	3148
	10°F	19200	1.75	3212
	15°F	20480	1.83	3278
	17°F	20942	1.85	3317
	20°F	21440	1.88	3345
	25°F	24000	2.06	3413
	30°F	24320	2.05	3482
	35°F	26504	2.21	3515
	40°F	30400	2.51	3553
	47°F	30988	2.52	3603
	45°F	31360	2.53	3626
	50°F	32000	2.53	3700
	55°F	24240	3.45	2060
	60°F	24480	3.38	2122
	65°F	25200	3.38	2185
	70°F	25920	3.37	2251
	75°F	26640	3.37	2319

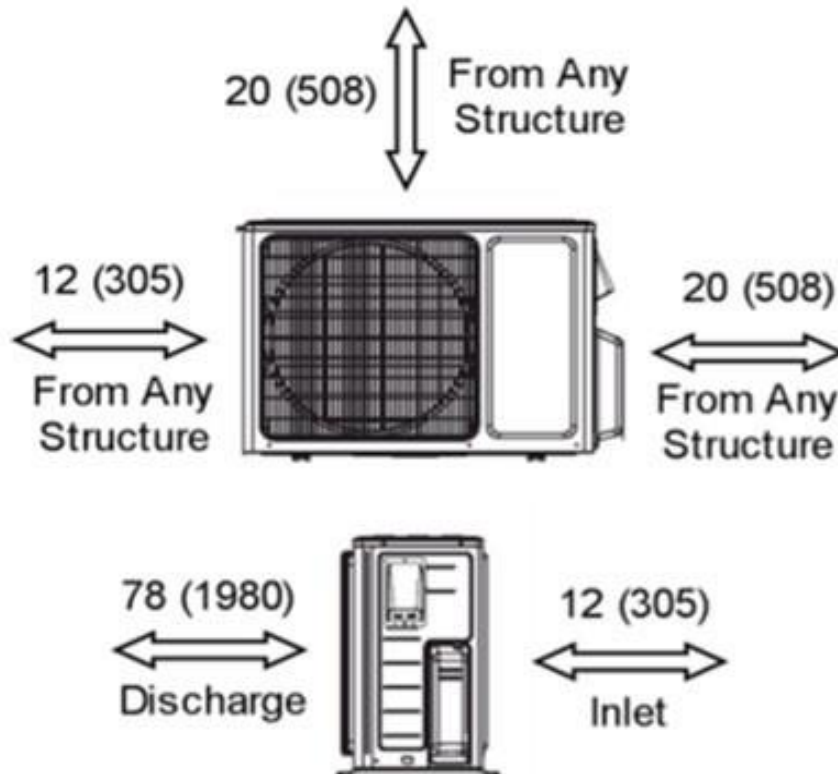
LEGEND: W - Watts
 DB - Dry Bulb
 TC - Total Capacity
 SHR - Sensible Heat Ratio
 COP - Coefficient of Performance

MINIMUM SPACING REQUIREMENTS

Units: inch (mm)



MINIMUM OUTDOOR CLEARANCES

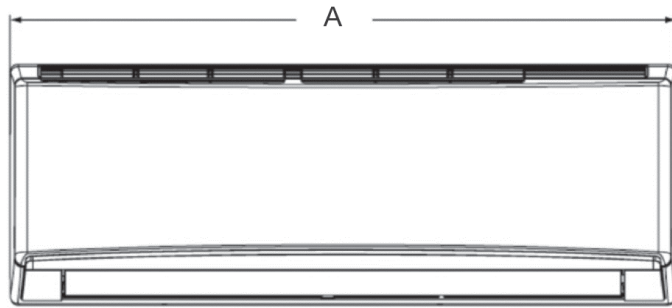


DIMENSIONAL SPECIFICATIONS

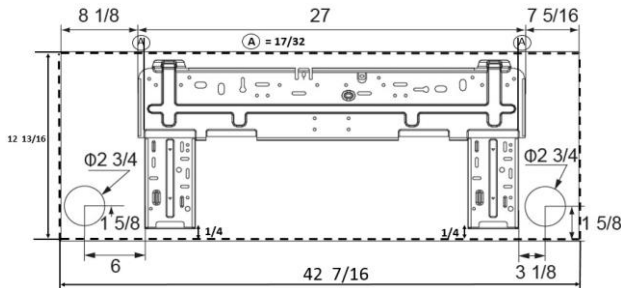
INDOOR UNIT DIMENSIONS

Units: inch

Model No: SAP24HP230V1AH



Dimensions	
A	44 1/2
B	13
C	9 3/4



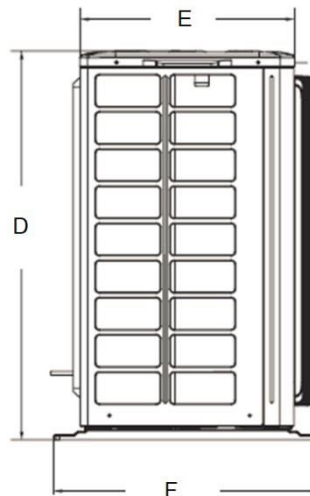
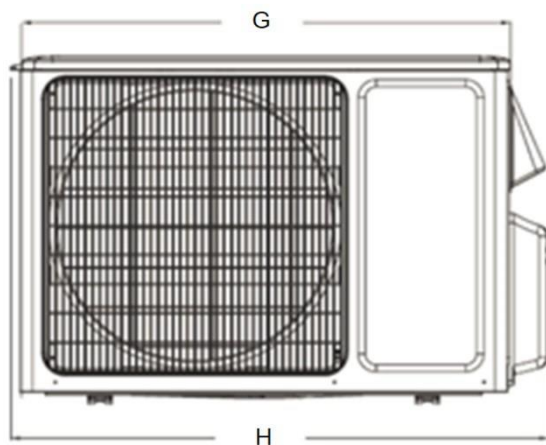
Weight (Net/Shipping) 36 / 43 LBS

Liquid Line Valve	1/4-in OD Flared
Gas Line Valve	5/8-in OD Flared
Drain Connector	5/8-in OD

OUTDOOR UNIT DIMENSIONS

Units: inch

Model No: SAP24HP230V1AO



Dimensions	
D	31 3/8
E	14 5/8
F	17
G	36 1/4
H	39 3/8
I	24
J	15 3/8

Liquid Line Valve	1/4-in OD Flared
Gas Line Valve	5/8-in OD Flared

Weight (Net/Shipping) 148 /158 LBS

Notes:

1. Recommended Interconnecting Cable Type 14 AWG 4 Stranded Copper Conductors THHN 600V Wire
2. Power wiring cable size must comply with applicable national and local codes.
3. Test conditions are based on AHRI 210/240.